

## 1. Mount Gripper



**1.1.** Insert the 4 Gecko pads by aligning the tab with the notch in the mounting plate.



**1.2.** Align two mounting holes between the gripper and robot. Insert the 2 mounting screws and tighten to 8 N-m with a 5mm hex key.

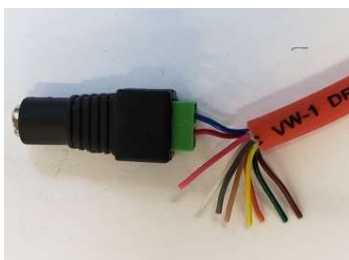
## 2. Connect Power, Comms, and Piezo Cables



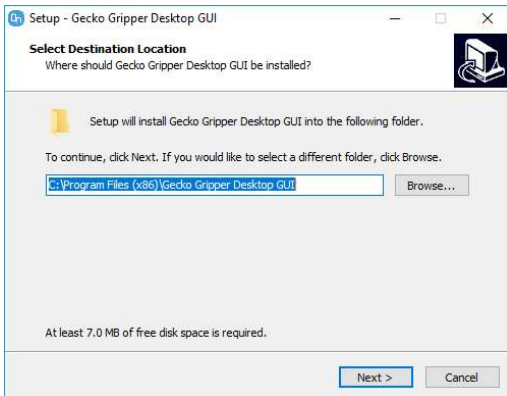
**2.1.** Plug in 10-pin power (24V via I/O cable). If using Ethernet, connect 8-pin cable as well. 4-pin is for optional cleaning system.

**2.2.** If using Digital I/O communication, wire flying leads to appropriate ports. If using Ethernet communication, plug in cable to appropriate port.

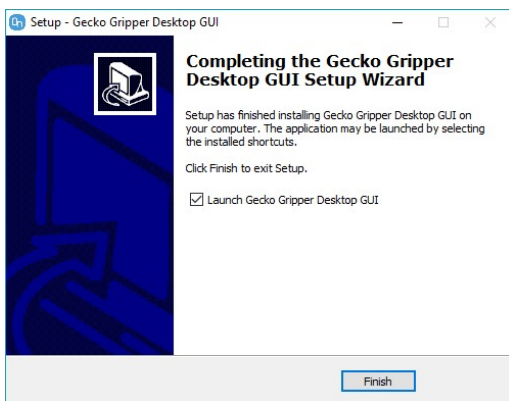
**2.3.** Use 4-pin piezo driver cable to connect gripper to high-voltage power supply.



### 3. Install Software



**3.1.** Install the Windows Desktop GUI from the OnRobot USB flash drive.



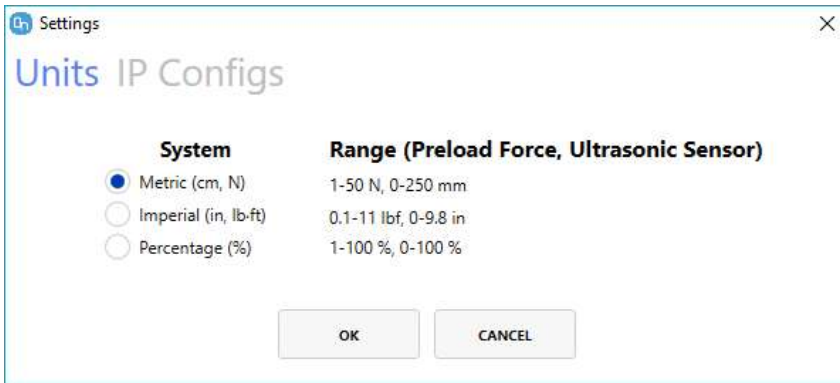
**3.2.** Select “Launch Gecko Desktop GUI” checkbox when installation completes.



**3.3.** Configure IP addresses. The default gripper IP address is 192.168.0.170 Set the computer IP address: 192.168.0.XXX where XXX is a different integer between 0-250.

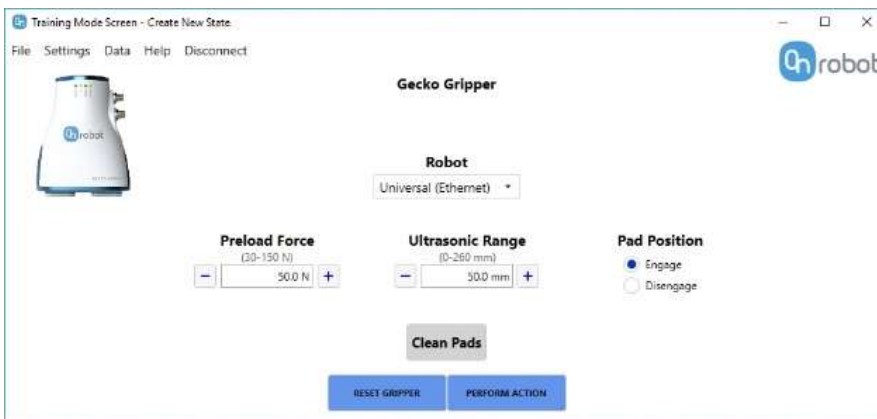
**NOTE:** The Training Mode Screen will appear when connection to the Gripper is successfully established.

## 4. Configure Settings



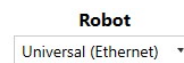
4. Select desired units under the “Settings” tab on the menu bar.

## 5. Define Gripper State



**NOTE:** The ultrasonic sensor has a 500 msec response time – account for this delay when robot programming

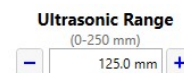
5.1. Select Robot and Communications.



5.2. Set Preload Force.



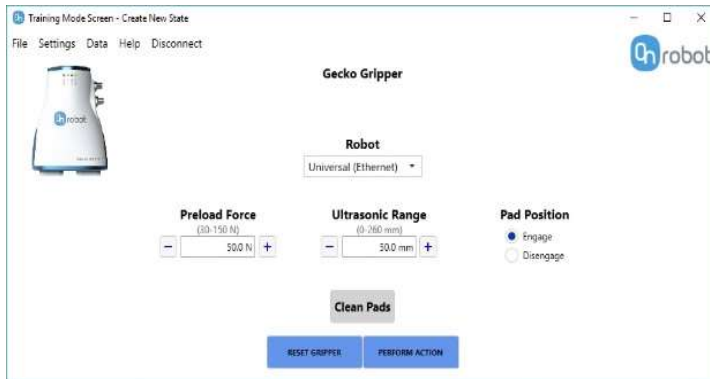
5.3. Set Ultrasonic Range for the gripper sensor.



5.4. The gripper arrives with pads fully retracted. To engage the pads for use, set the Pad Position to “Engage.”



## 6. Perform Action



6. Select “Perform Action” to actuate the gripper and set parameters.

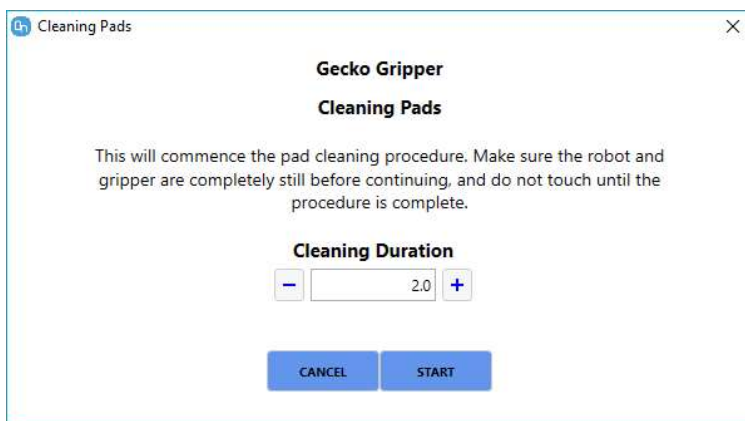
This step must be completed when using I/O comms to save the configuration to the SD card.

## 7. Other Features



7.1. Retrieve Error Logs from the “Help” menu bar by clicking on “Error Logs.”

7.2. Click “Load Logs” for full error log information. By selecting “Save to File,” you can save error logs.



7.3. If using the optional Piezoelectric Cleaning System, you can specify the duration of a cleaning cycle in the Clean Pads window, accessed via the “Clean Pads” button on the Training Mode Screen.