



DRIVER INSTALLATION GUIDE

The OptoForce DAQ requires a device driver in order to operate. Operation systems like Windows 7 or Windows 8 may install it automatically. However, in many cases the DAQ needs manual driver installation.

PLEASE NOTE THAT ADMINISTRATOR PRIVILEGE COULD BE REQUIRED FOR THE DRIVER INSTALLATION IF SO PLEASE CONTACT YOUR SYSTEM ADMINISTRATOR!

How to decide if manual installation is needed

First Step

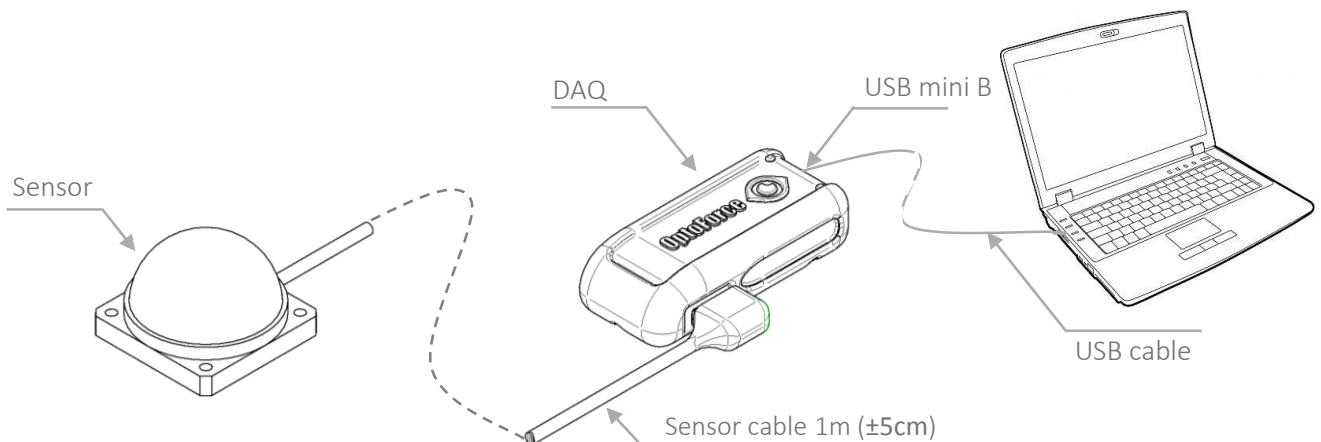
Connect the sensor to the DAQ and to your PC, as it is shown in the figure below.

Second Step

In the pendrive, locate the **ODV** folder and start the OptoForce Data Visualization Software (**OptoForce_DV.exe**)

Result

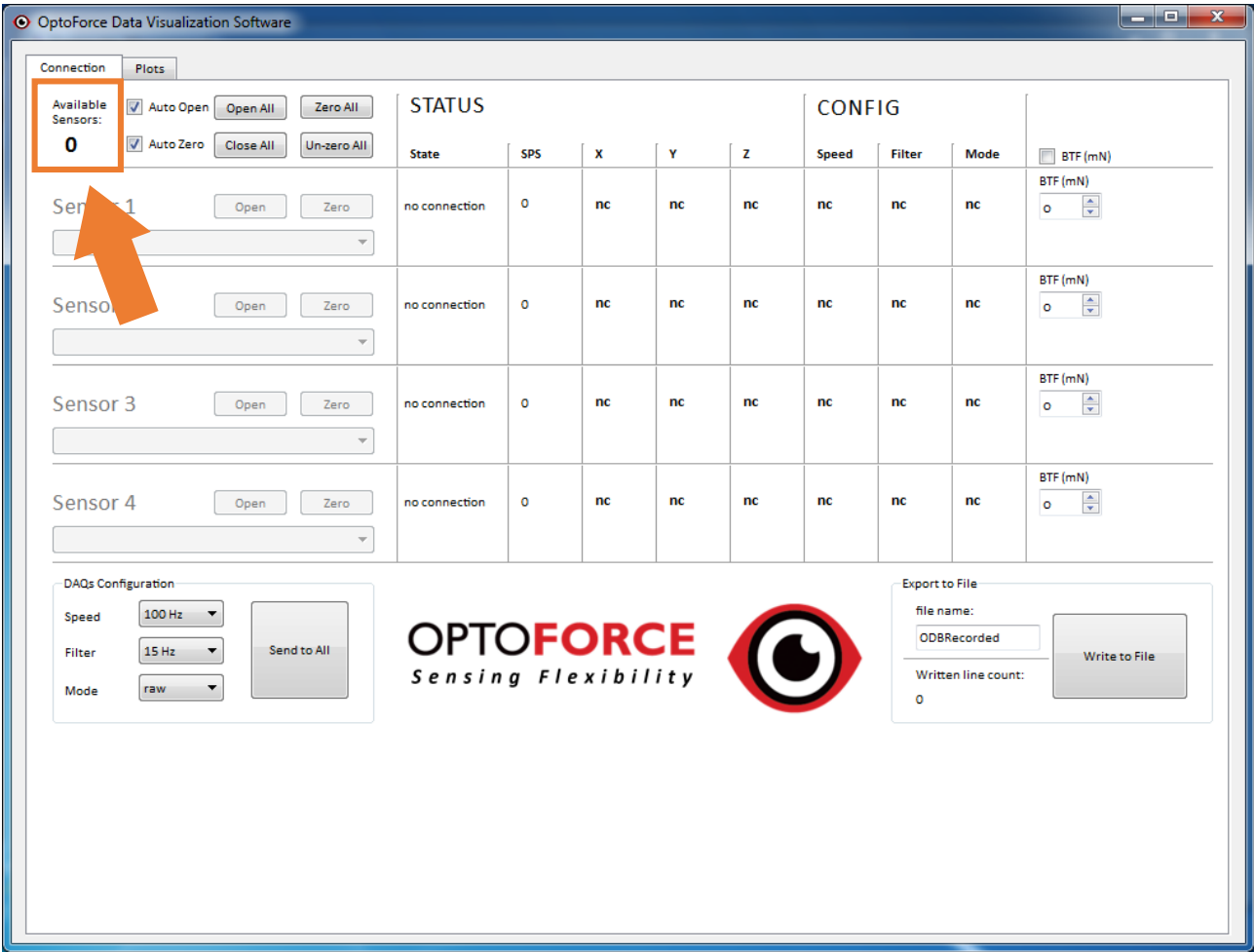
If in the **OptoForce Data Visualization** software on the **Connection** tab, the **Available Sensors** shows **0** than manual driver installation is needed!



Manual Driver Installation

WINDOWS VISTA & 7

- Please disconnect and reconnect the DAQ while the data visualization software is running to verify the automatic driver installation.
- If in the **OptoForce Data Visualization** software on the **Connection** tab, the **Available Sensors** shows **0** than manual driver installation may be needed.

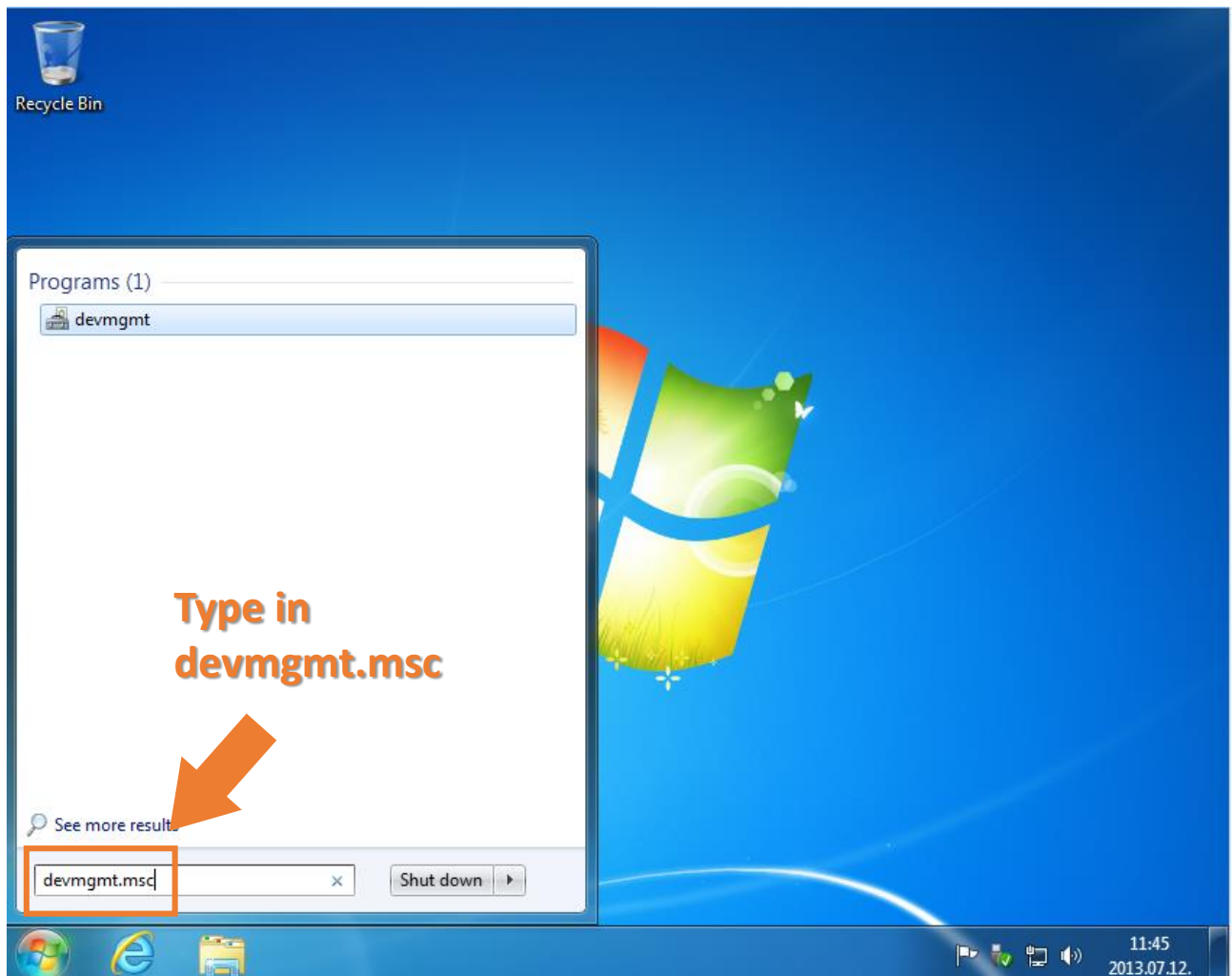




Manual Driver Installation

- In order to do a manual driver installation the *Device Manager* must be opened.
- First make sure you have closed all running applications.
- Open the **START** menu and type in **devmgmt.msc** and hit **ENTER**.

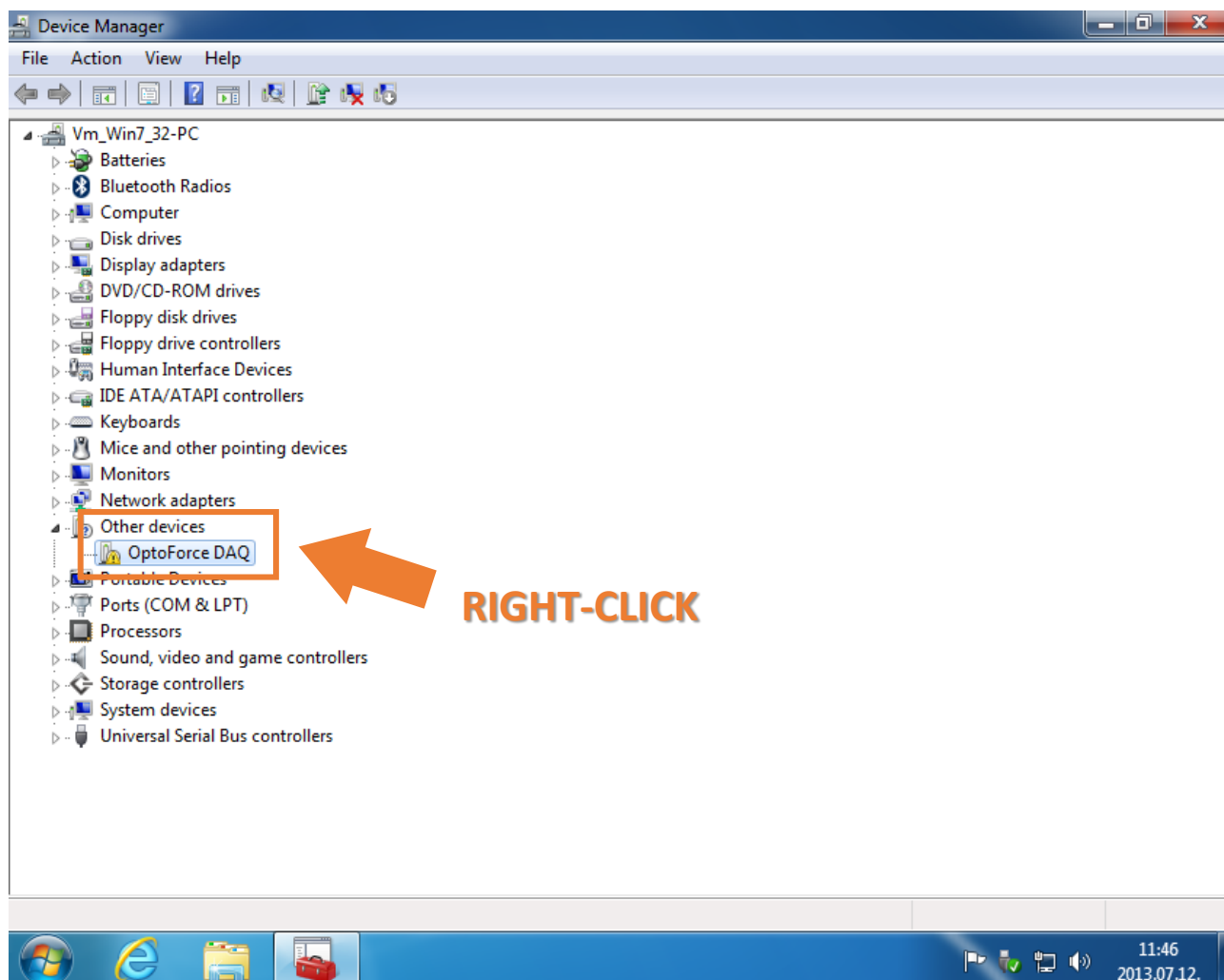
PLEASE NOTE THAT ADMINISTRATOR PRIVILEGE COULD BE REQUIRED FOR THE DRIVER INSTALLATION IF SO PLEASE CONTACT YOUR SYSTEM ADMINISTRATOR!





Manual Driver Installation

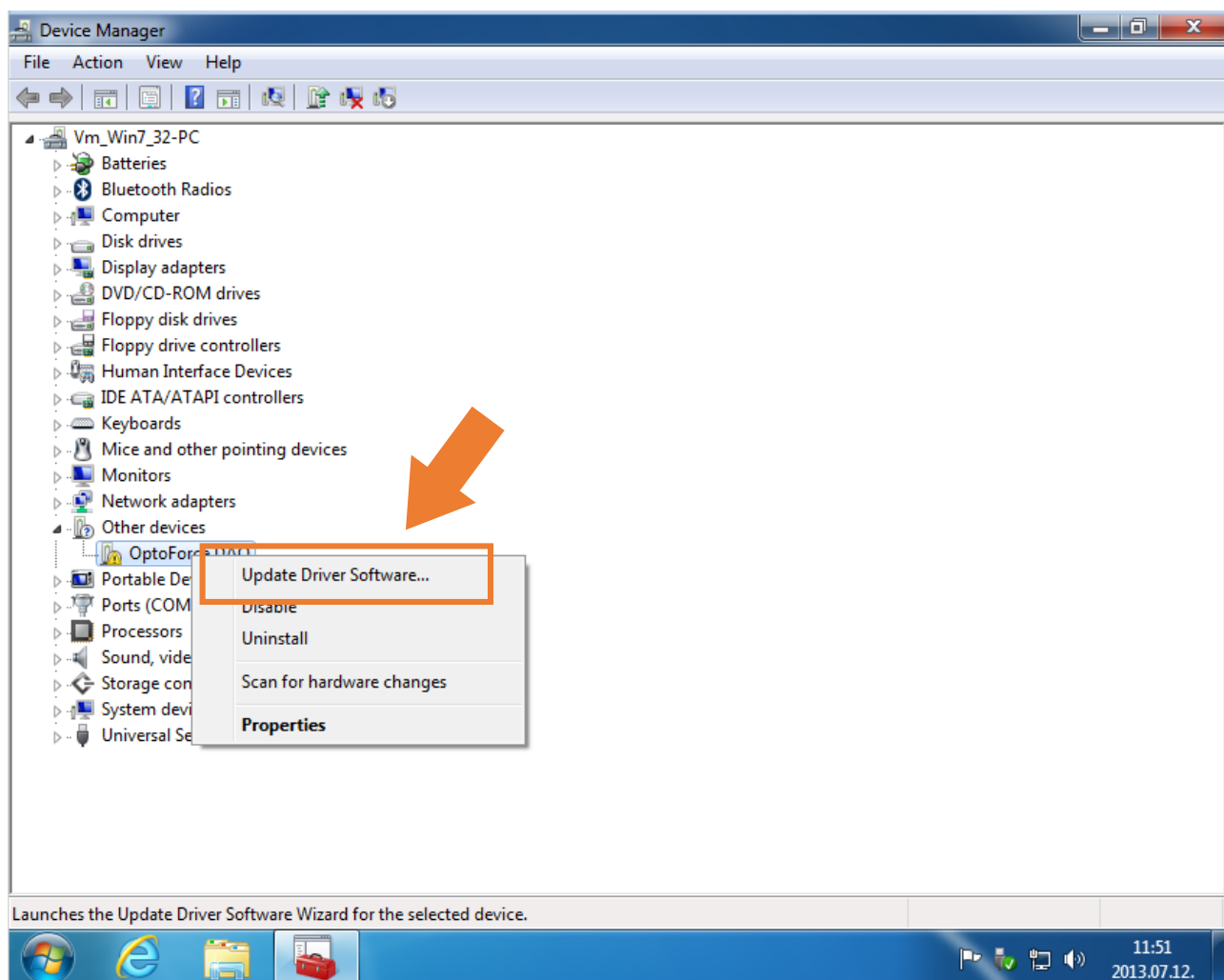
- In the Device Manager select **OptoForce DAQ** (with a small yellow triangle) and **right-click** on that.





Manual Driver Installation

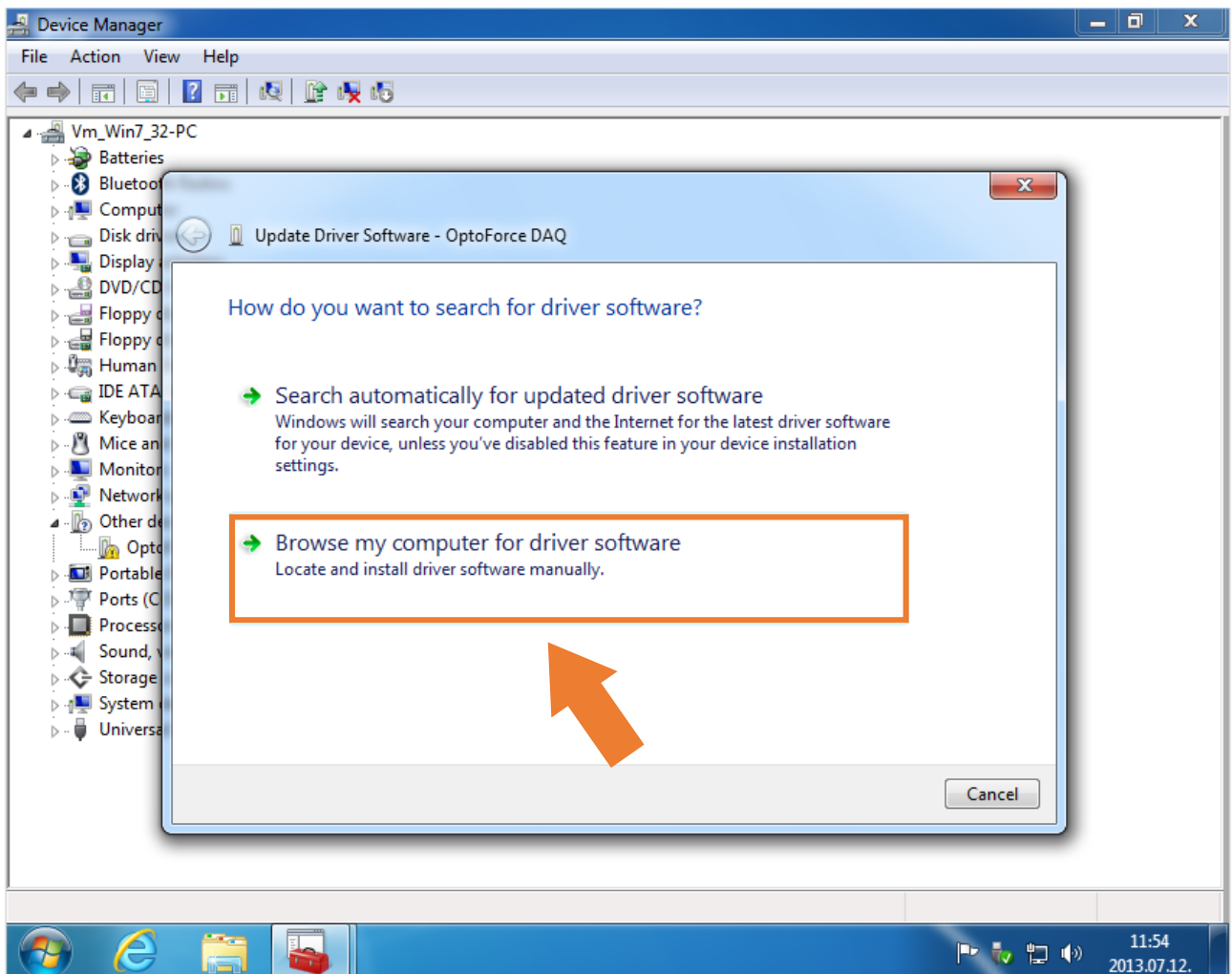
- From the pop-up menu choose **Update Driver Software...** .





Manual Driver Installation

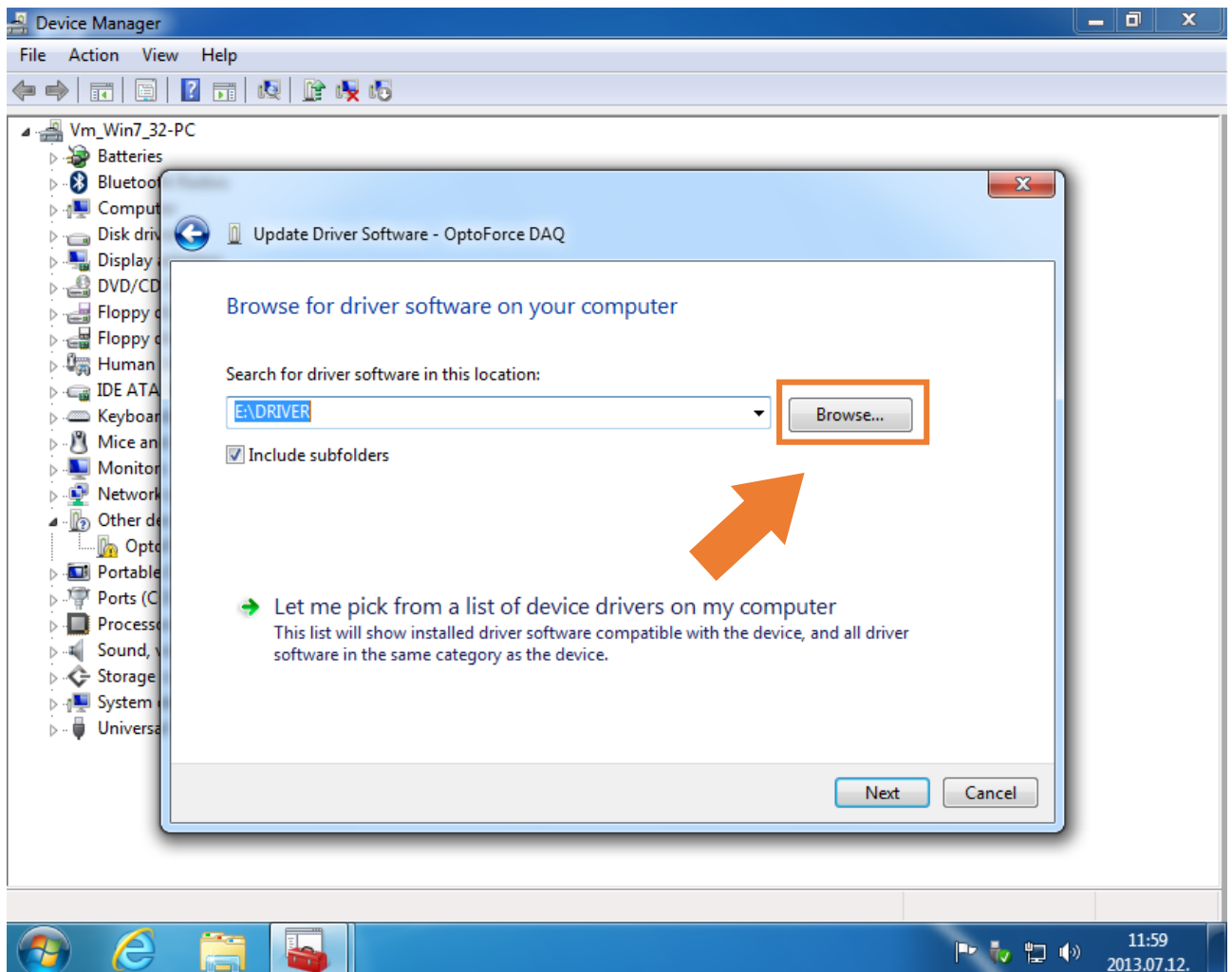
- Then select **Browse my computer for driver software** .





Manual Driver Installation

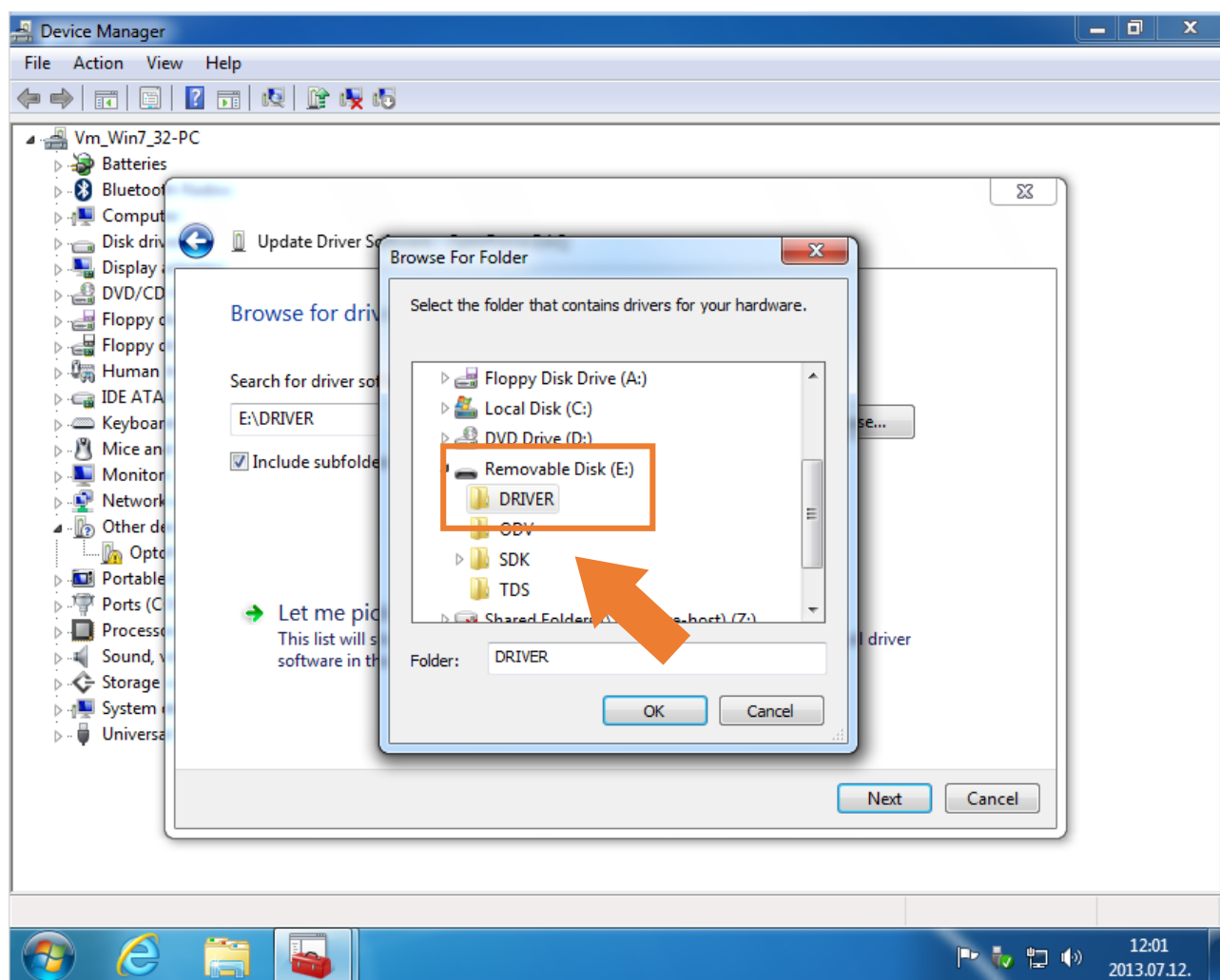
- Hit **Browse** and point to the **DRIVER** folder on the pen drive.





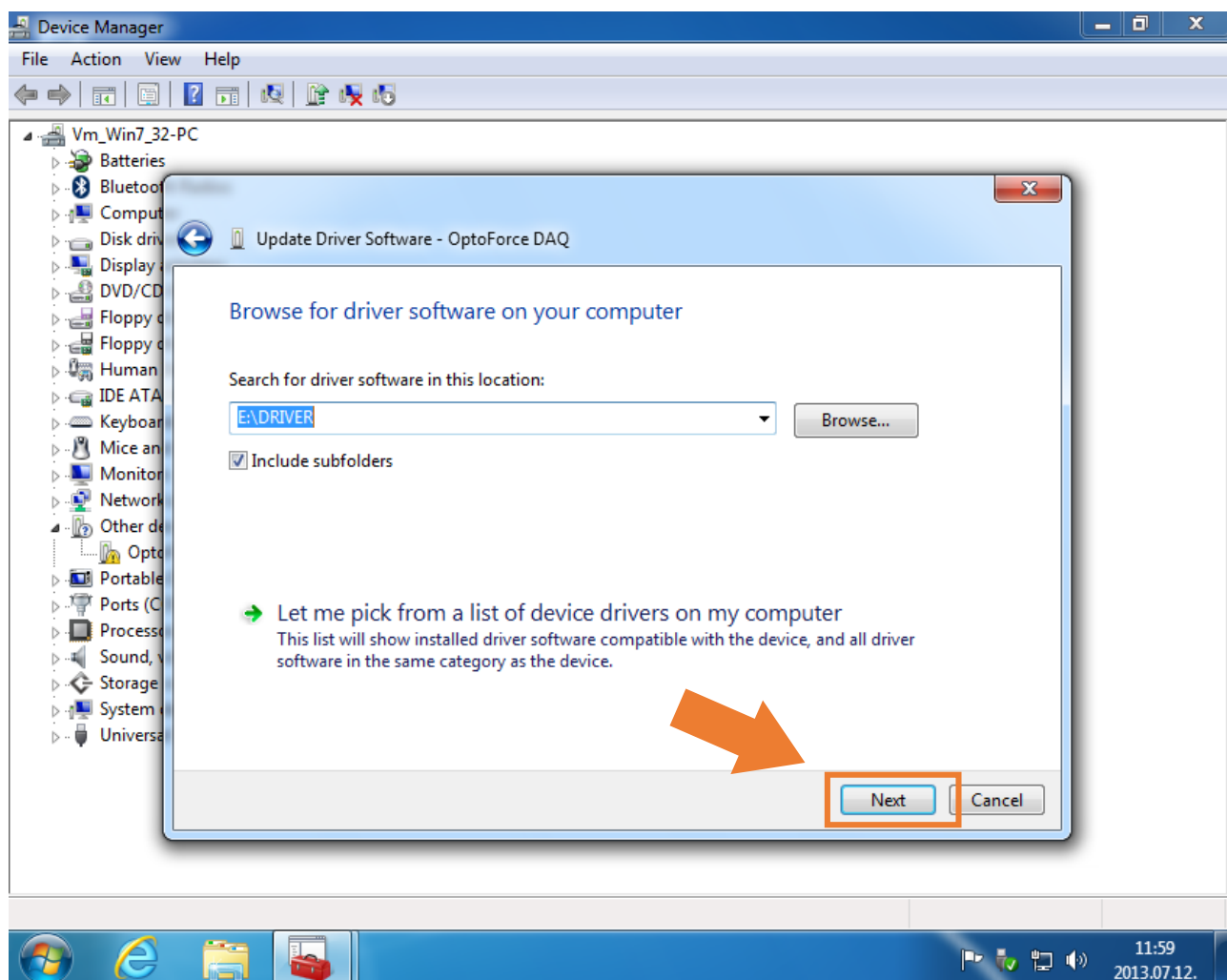
Manual Driver Installation

- Browse for the **DRIVER** folder in the pen drive and hit **OK**.



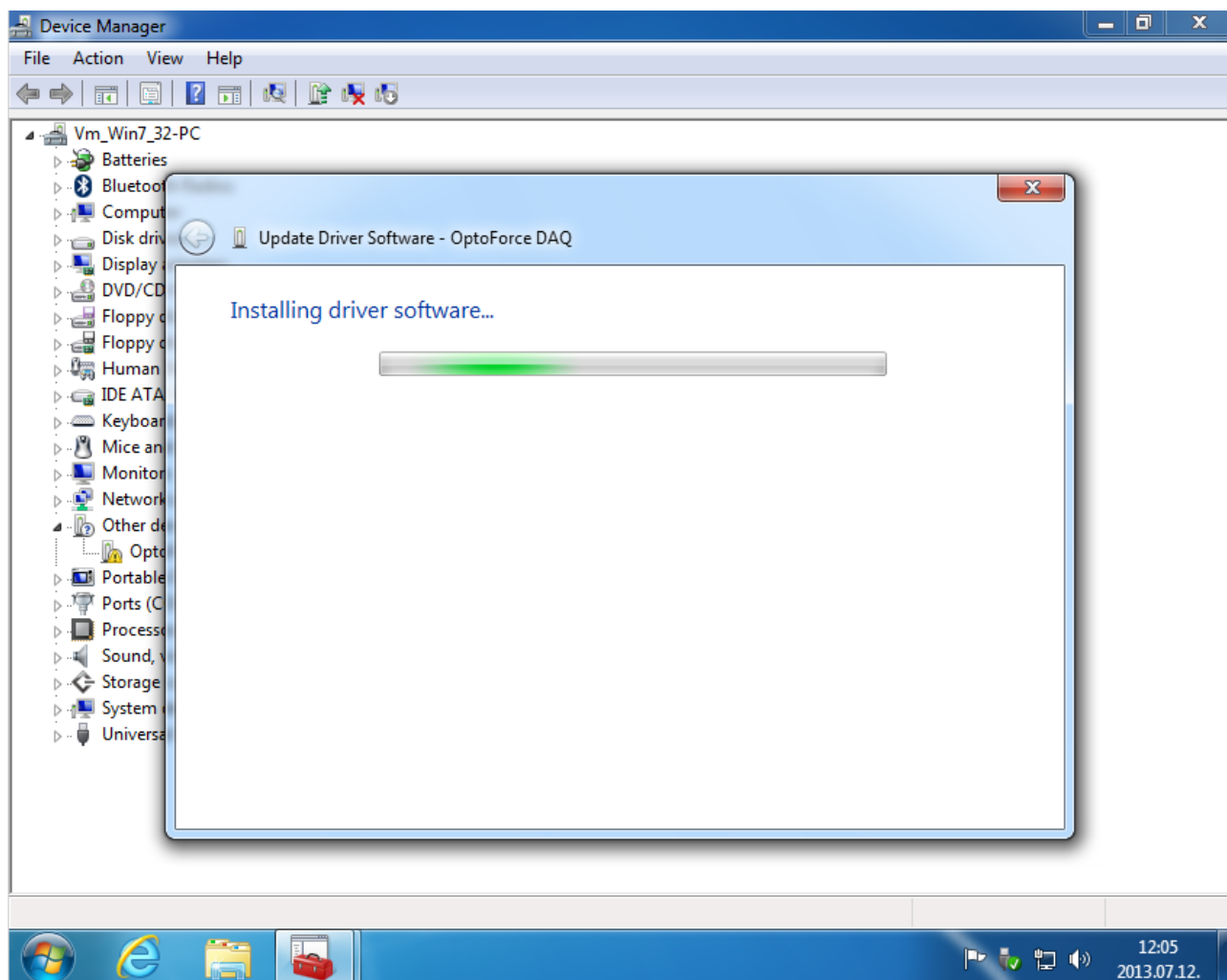
Manual Driver Installation

- Then click on the **Next** button.



Manual Driver Installation

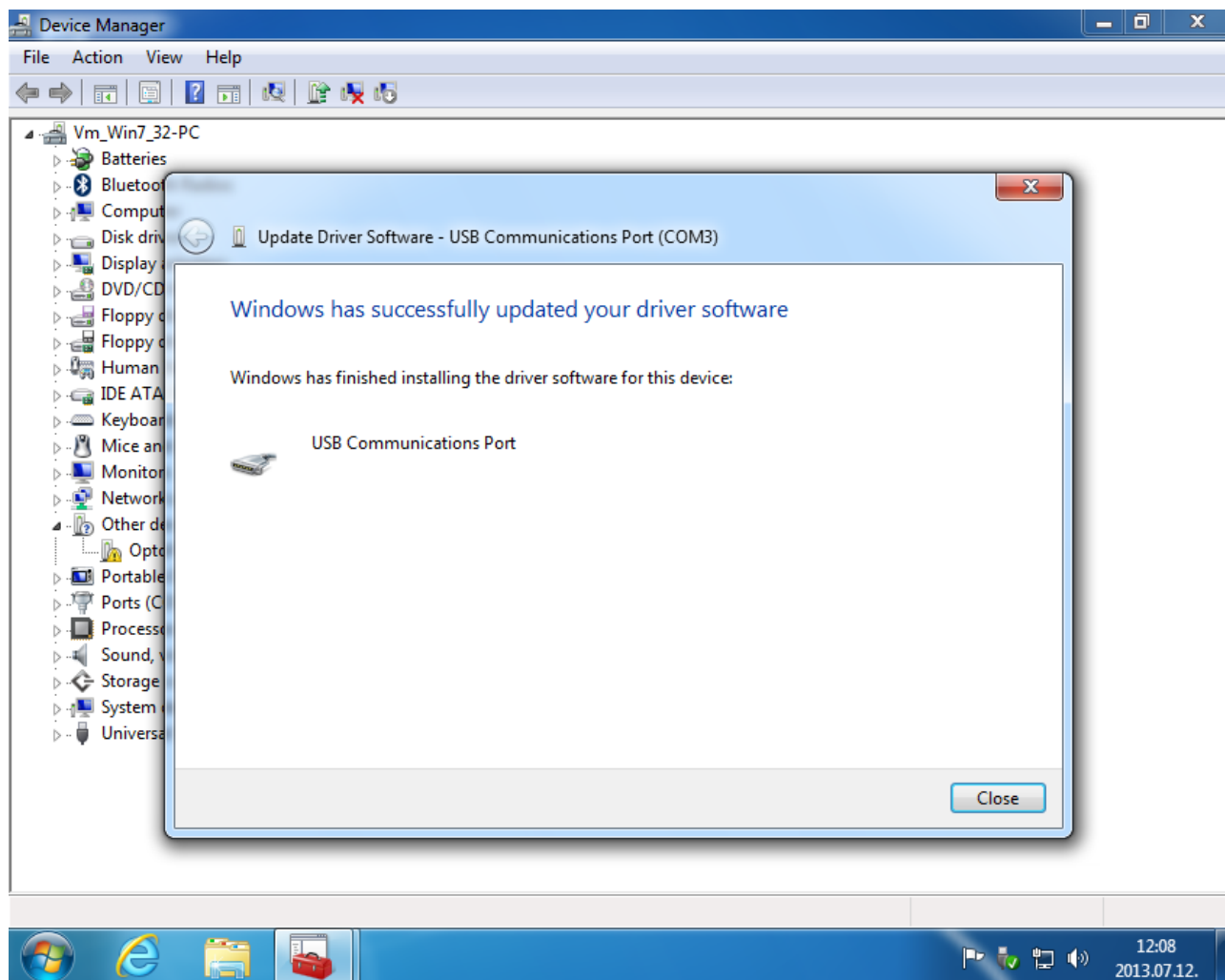
- Wait for the installation to complete.





Manual Driver Installation

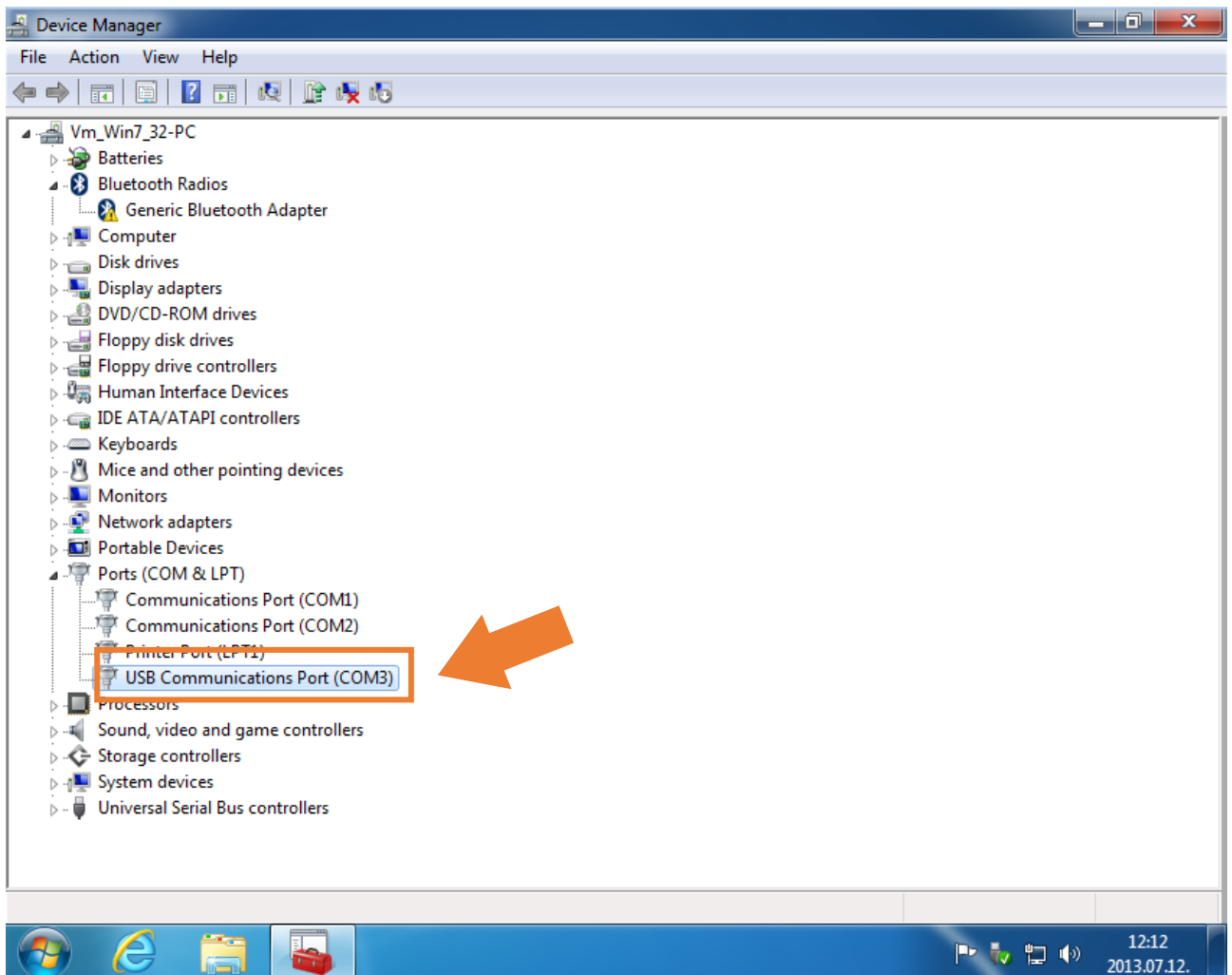
- Once the installation completed a new **USB Communication Port** is available (that is required for the DAQ to communicate with the PC).
- You can **close** the dialog window.





Manual Driver Installation

- In case of a successful driver installation you must find a new **USB Communication Port** under the **Ports (COM & LPT)**.
- Now **disconnect** the DAQ and then **reconnect** and you may **restart** your operating system.



Manual Driver Installation

- Now you can run the OptoForce Data Visualization Software and you can check the **Available Sensors** at the **Connection** tab to verify the success of the driver installation.
- For the first time you may disconnect and reconnect the DAQ (after the reconnect please **wait for a few seconds.**)
- If you can see available sensor(s) you are **ready** and you can start evaluating the development kit.

